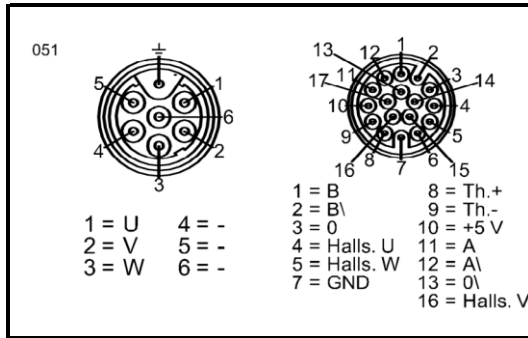


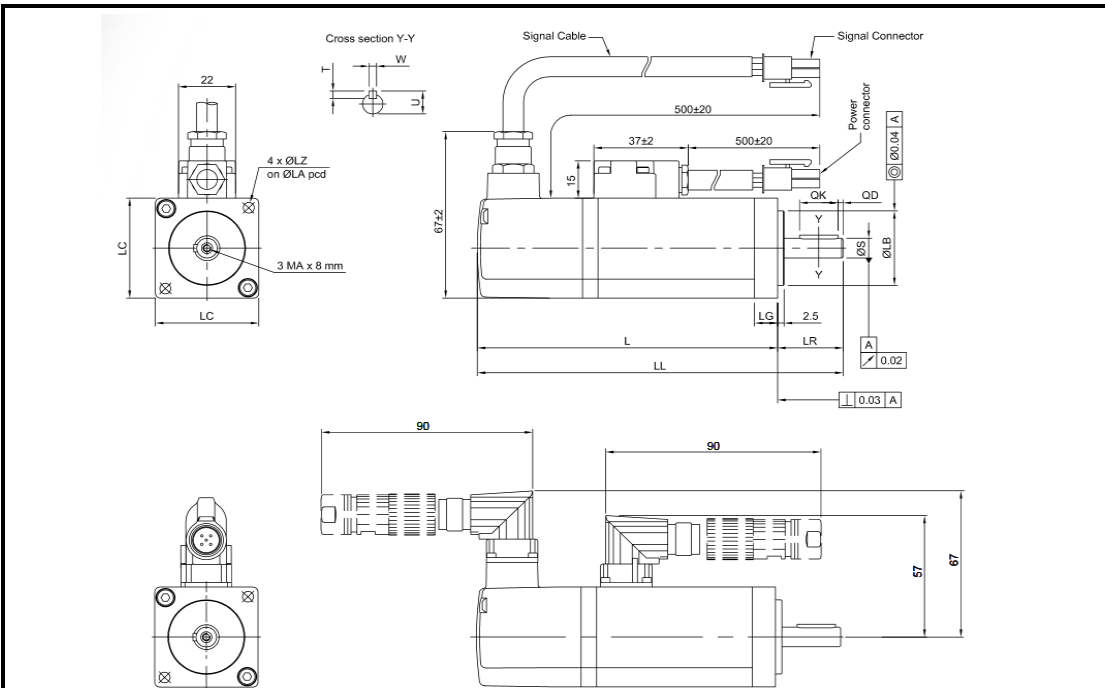
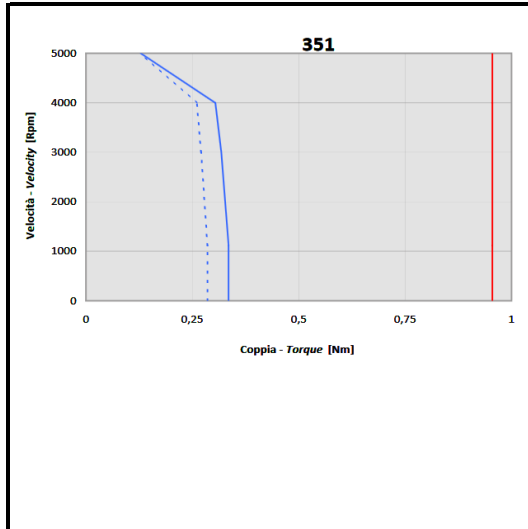
Mattke-Artikelnummer:
MS0402B351F20481



www.mattke.de
 Support: +49 761 15 234 15



Rated Power	100	W
Applied Voltage	230	V
Stall Current	0,51	A
Rated Current	0,5	A
Peak Current	1,53	A
Stall Torque	0,34	Nm
Rated Torque	0,32	Nm
Peak Torque	0,96	Nm
Rated Speed	3.000	rpm
Max. Speed	5.000	rpm
Voltage Constant	40	V _{rms} /Krpm
Torque Constant	0,666	Nm /A _{rms}
Winding Resistance	68,8	Ohm
Winding Inductance	88	mH
Rotor Inertia	0,06	kg*m2*10-4
Max. Radial Load	120	N
Max. Axial Load	80	N
Mass	0,65	kg



Servosistemi Pro-Line - Pro-Line A.C. servosystems

Type S040	L	LL	LR	LG	LC	ØLA	ØLZ	ØS h6	ØLB	ØK	ØD	U	W	T
S0401B	102 (142)	127,5 (167,5)	25,5	9	40	46	4,5	8	30	15	2	9,2	3	3
S0402B	117 (159)	142 (184,5)	25,5	9	40	46	4,5	8	30	15	2	9,2	3	3